

Two Tone Button Cushion

Button Sewing Foot

WHAT YOU WILL NEED

Janome Machine
Zig Zag Foot (A)
Button Sewing-on Foot (T)
 $\frac{1}{4}$ Inch Seam Foot (O) *optional*
Janome Sharp Needle #12/80
Janome Plastic Bobbin x 1
Scissors
Quilting/Dressmaking Pins
Fabric Chalk Pencil / Fabric Marker Pen
Sticky Tape *optional*
Hand Sewing Needle
Iron and Ironing Board



FABRIC & NOTIONS

Main Fabric: 50cm Cotton Fabric x 112cm (20"x 44")
Light Fabric: 40cm Cotton Fabric x 40cm (16"x 16")
5 x Buttons of different sizes (matching main fabric)
Cushion insert: 41cm x 76cm (16"x 30")
Reel of sewing thread for construction

CUTTING INSTRUCTIONS

Main Fabric:

- Cut 1 piece 47cm x 38cm (18½" x 15")
- Cut 1 piece 51cm x 38cm (20" x 15")

Light Fabric:

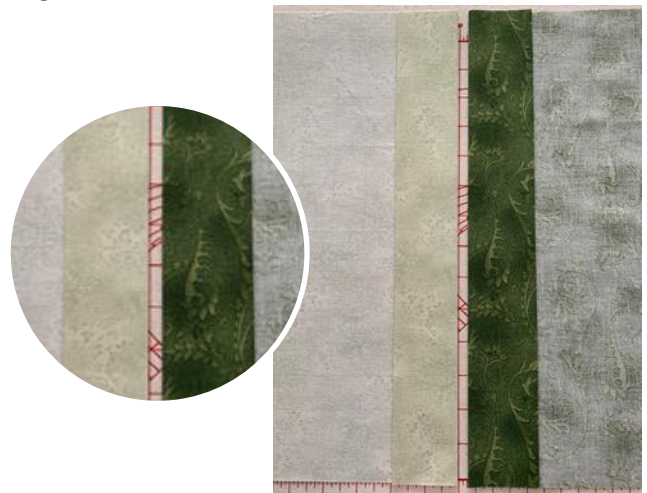
- Cut 1 piece 35cm x 38cm (13½" x 15")

INSTRUCTIONS

Step 1

Place the light fabric piece and the main fabric piece 51cm x 38cm (20" x 15") side by side with the wrong side of the fabric facing up.

Make a double hem along the 38cm (15") side, fold the raw edge of the fabric back 5cm (2") and press, then fold back another 5cm (2") press again – see below image



Step 2

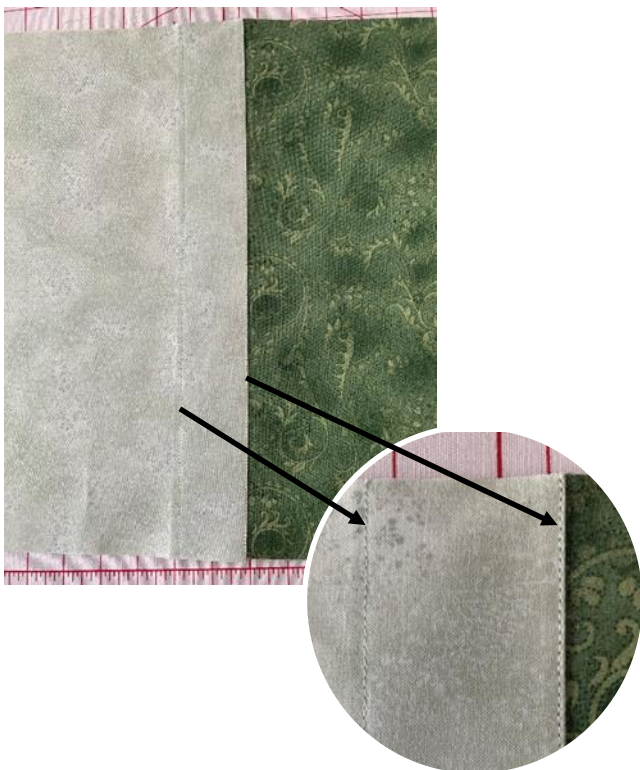
With the right side of the fabric facing up, overlap left-side piece over the right-side piece, aligning the hems. Pin in place.



Step 4

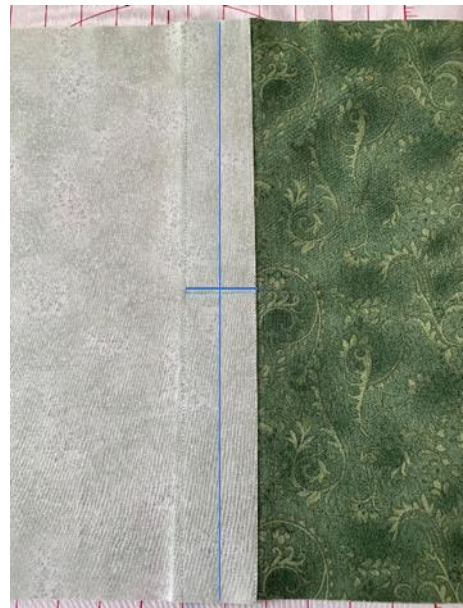
Thread the machine with the construction thread.
Attach the Zig Zag Foot (A)
Select a straight stitch.

Edgestitch close to the right edge and down the left side to hold the two pieces together.

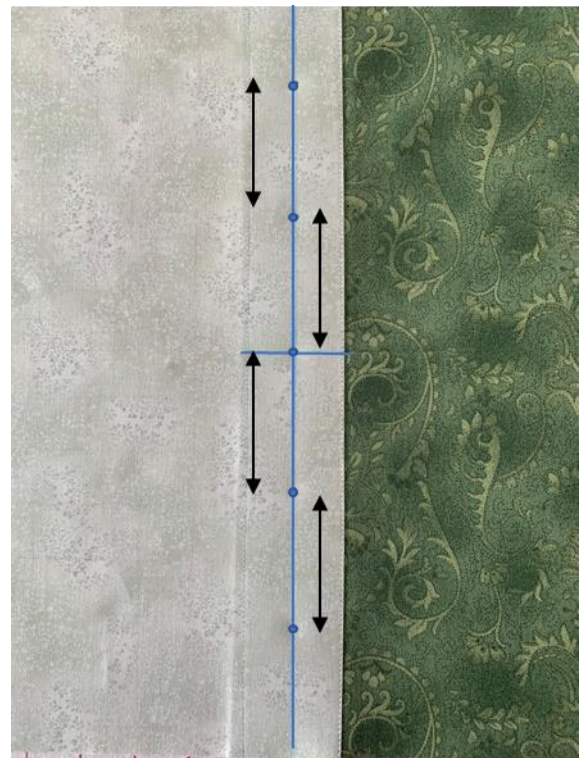


Step 5

With a marking pen or chalk mark the centre down and across the hemmed area.



Starting from the centre, measure 6cm (2.5") apart and mark. These 5 dots are the button positions.



Step 6

Select **Sewing Application Mode**



Select **Button** Sewing Function



when this function is selected the feed dogs will lower automatically.

Note: "Feed Dogs" are lowered so the machine doesn't feed the button across the plate and the needle can stitch over and over in the one position.

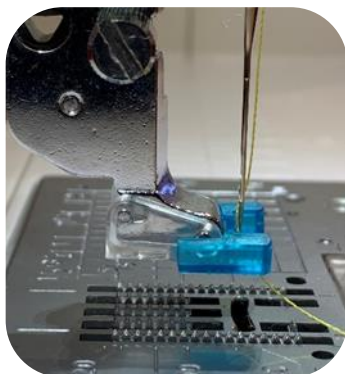
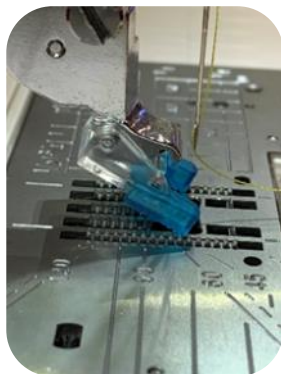
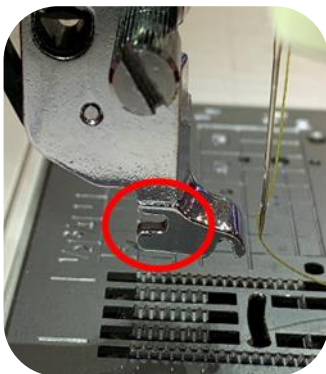
Manual Set-up: If your machine does not have the Sewing Application Mode, lower the feed dogs manually (refer to your instruction book for more information). Select a Zag Zig Stitch and adjust the width for the spacing of the holes on the buttons. Sew for about 4 - 6 stitches, then tied off the threads to finish.

Tip: On a regular button, the holes are 3.5mm apart, set the stitch width to 3.5. If using a specialty button you will need to check the stitch width.

Step 7

Attach the Button Sewing Foot to the machine.

To attach, hook the foot onto the back of the foot holder, then click into place at the front like a regular snap-on foot.



Step 8

Position a button over the first mark.

Use tape to hold the button, optional.

Foot Fact: The button sewing foot has a textured rubber sleeve to hold the button securely in place while sewing.



TIP: Position the Button sewing foot over the button, while turning the handwheel with your hand, lower the needle into the left hole of the button, then lower the foot. Raise the needle by turning the handwheel until the needle bar swings to the right. To adjust the stitch width so that when the needle comes down on the left-hand side it goes directly through the centre of the left hole, and when it comes down on the right-hand side it goes directly through the centre of the right hole, press the "+" or "-" key to adjust the width.

Once the needle clears the holes on either side, start sewing & continue until the machine stops automatically.

Repeat for the remaining 4 buttons.



Step 9

Remove the Button Sewing foot.

Attach the Zig Zag Foot 'A' or ¼ inch seam foot.

Join the back piece to the right-side piece of the cushion, with right sides together, using a ¼" seam allowance.



Then join the left side piece with the back piece leaving an 20cm (8") opening.



Press the seams towards the back of the cushion.

To complete the cushion temporarily pin the opening closed.

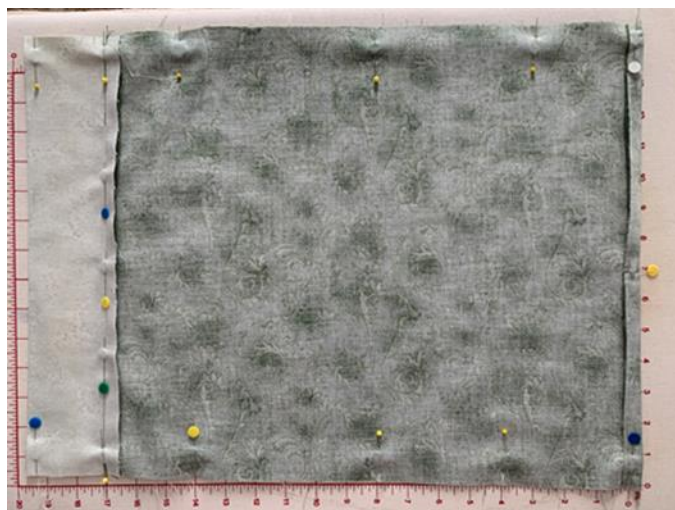


With right sides together, fold at the seam line that was sewn at the beginning of this Step and pin in place.

Step 10

Flatten the cushion cover until the back piece lies flat over the top piece. Press, then pin around the edge.

Sew across the top & bottom sides. Remove all the pins.



Trim across all four corners.

Then turn right side out.



Though the opening place the cushion insert, and hand stitch the opening closed.



FINISH