

WHAT YOU WILL NEED

Janome Cover Pro *(project made on CP3000P)*

Cover Hem Guide [type 2] PN 795839104

Organ Needles: EL x 705CR Size 14/90

Tweezers

Dressmaking Scissors / Thread Snips

Erasable Fabric Marker Pen

Tape Measure / Pins

Ironing Board and Iron

FABRIC & NOTIONS [fabric is enough for 2 aprons]

Apron

Drill or Cotton Canvas: 1metre x width of fabric

Apron Pocket [contrast fabric]

Drill or Cotton Canvas 30cm x WOF

Cotton Tape: width 12-18mm x 2.5m

3 x Overlocking Threads to suit fabric (used red)

30wt Weight Decorative Thread for top cover hem

Bodkin or large safety pin

CUTTING INSTRUCTIONS

Apron: Cut 1 piece 20" x 30" / 51cm x 76cm

Apron Pocket: Cut 1 10" x 13½" / 25½cm x 32cm



INSTRUCTIONS

Step 1

Lay out the apron fabric.

Measure and mark $4\frac{1}{2}$ " (11½cm) in from the top corners and 10" (25½cm) down each side.

Draw a line between the two marks and cut off the corners.

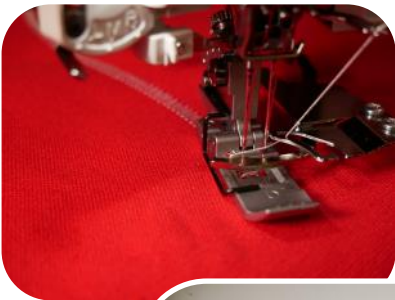


Step 2

Pull down the built-in top cover stitch guide and thread the machine for 2 thread wide top-cover hem.

Tip: Test sew prior to stitching on the apron.

Decorate across the apron, edge to edge in soft wavy lines, repeat as desired. Trim threads. Push the button to retract the top cover stitch guide when finished.



Step 3

Measure and press the top edge of the under 2cm / $\frac{3}{4}$ "

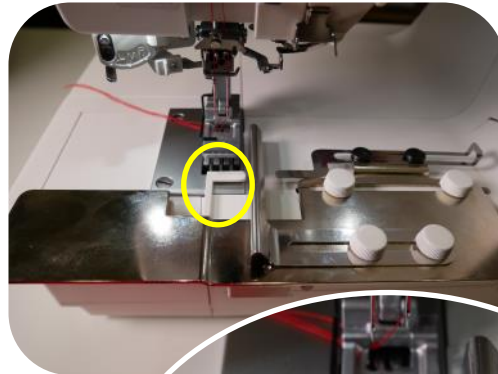
Step 4

Attach the cover hem guide attachment with the two set screws included with your machine.

Position the left guide step to align with the left-hand needle position and tighten the thumbscrews.

Loosen the thumbscrews to slide the hem cloth guide 2cm / $\frac{3}{4}$ " away from the guide step (this is the hem width) and tighten.

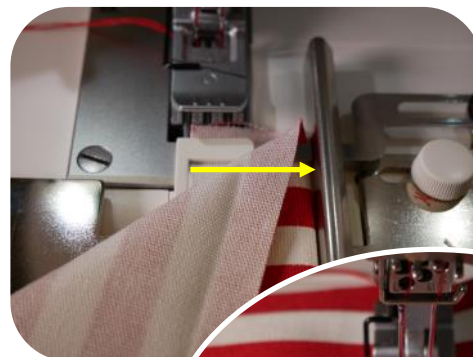
Note: See full how-to instructions in the attachment packaging.



Step 5

Line up the raw edge of the hem with the guide step and push the sliding guide into position. The folded edge of the hem will line up with the hem cloth guide.

Sew across the hem to secure in place.



Step 6

At the end, stop and raise the foot.

Using tweezers, reach under the foot and pull the two needle threads towards you. Cut the threads leaving a tail. Firmly pull the fabric out towards the back and cut the looper thread. [This will pull the needle threads to the back and lock of the stitches].

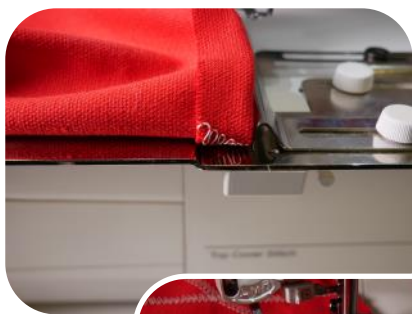
Tie a knot in the threads and trim.



Step 7

Fold in 1.5cm (½”) on the two sides and the top edge of the apron then press the folds.

Adjust the hem cloth guide to 1.5cm (½”) and sew each hem. Lock off the threads—see Step 6.



Step 8

Measure and press the bottom hem up 4½cm / 1¾”

Adjust the hem cloth guide to the wider hem, then sew the hem and lock off the threads, the same as in Step 6.



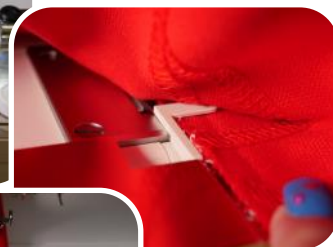
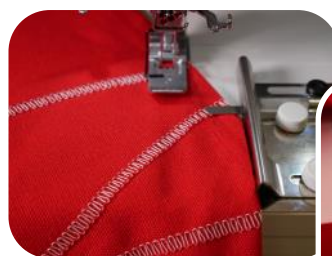
Step 9

Press the top side diagonal edges in 3.5cm / 1½” and pin in place. *(Due to the angles, the hem doesn't go all the way to the side or top seams).*

Adjust the hem cloth guide and press the button to release the sliding guide finger.

Starting at the edge of the fabric, sew until the hem aligns to the sliding guide. Push the guide in, making sure it is over the hem and continue to sew. Lock off threads.

Tie a knot in the threads and trim.



Step 10

Measure and fold in 1cm / ½" on the sides and bottom edge of the pocket.

Then press and pin in position on your apron.



Step 11

Remove the Cover hem guide attachment.

Line up the edge of the foot, with the edge of the pocket and sew down the side of the pocket. Stop when the needles line up with the edge of the pocket and raise the foot.

Using tweezers, reach under the foot and pull the two needle threads towards you. Cut the threads leaving a tail. Firmly pull the fabric out towards the back and cut the looper thread. *(This will pull the needle threads to the back and lock of the stitches).*

Knot the threads together and trim.

Repeat for the other side and bottom edges.



Step 12

Using the bodkin/large safety pin, thread the cotton tape through the angled hem channels from the top edge to the side, leaving a loop for around the neck.



Press the apron and it's ready to use.

FINISH

