

#### WHAT YOU WILL NEED

Janome Sewing Machine *with AcuFeed Flex*  
 Single Dual feed holder & Foot (VD)  
 Single AcuFeed Zipper Foot (ED)  
 Janome Leather needle #14 (sewing vinyl)  
 Janome Purple Tip needle (sewing fabric)  
 Janome plastic bobbins  
 Erasable fabric marking pen / Chalk pencil  
 Quilt clips  
 Scissors for cutting vinyl and paper | Thread snips  
 Cutting mat | Quilting ruler | Rotary cutter  
 Iron and Ironing Board

#### FABRIC & NOTIONS for Chicken, Pig & Cow [all 3]

##### Pouch Vinyl:

Yellow, Pink & White @ 30 x 50cm | 12 x 20"

##### Additional Vinyl Pieces:

Orange & Pink for beak & snout @ 8 x 10cm | 3 x 4"

Black for eyes & nostrils

Brown for cow muzzle & spots 15 x 23cm | 6 x 9"

##### Lining: Cotton fabric @ a fat quarter

##### Additional Cotton Fabrics:

Fat Quarters in plain red, pink, bone & white

##### Woven interfacing: need 3 pieces 13 x 13cm | 5" x 5"

##### Threads: Black for facial features

Colours to match vinyl & cotton fabrics

##### Zip: in Red, Pink & White 25 cm | 10" (nylon teeth)

##### Quick dry glue

#### CUTTING INSTRUCTIONS *per animal pouch*

*Pouch:* 2 pieces 14 x 23 cm | 5½ x 9"

*Lining:* 2 pieces 13 x 21½ cm | 5 x 8½"

*Animal face sections:* use pattern templates

*Woven Interfacing:* 1 piece 13 x 13 cm | 5 x 5"

*Zip Ends:* 2 pieces 4 x 5 cm | 1½ x 2"

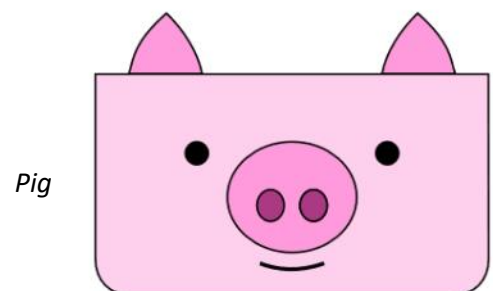
**Pattern Templates** for all Animal Pouches, located on last pages of these instructions.



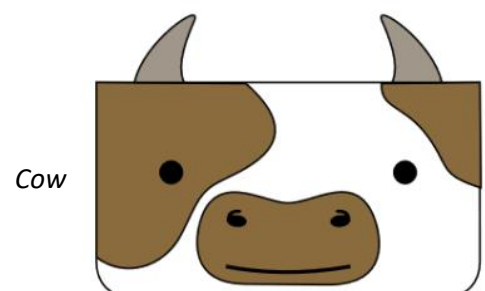
Chicken



Alternatives



Pig



Cow

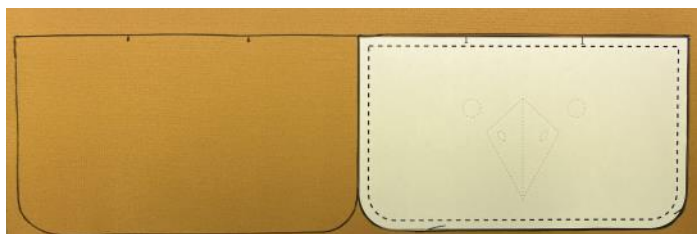
## INSTRUCTIONS

*Note: Making this project black thread was used, to simply show the stitching through out the step images. Use thread to blend with your project colours.*

The images through out these instructions are for the chicken pouch, included at steps are instructions for pig & cow pouches.

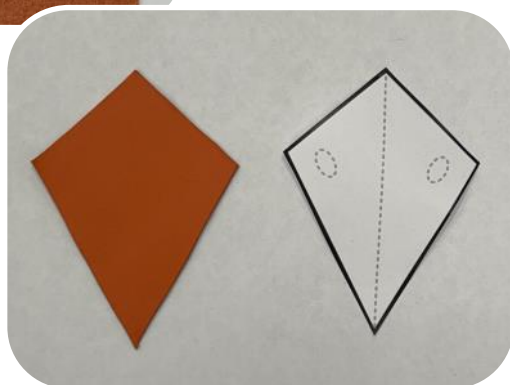
### Step 1

Print and cut out all the required pattern pieces.  
Trace two of the pouch pattern on to the back of the vinyl and cut out.  
Mark the position of the comb/ears/horns on the wrong side of the back piece.



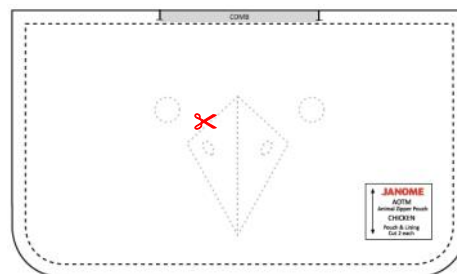
### Step 2

Trace the beak/snout/muzzle and spots on to the back of the vinyl and cut out.

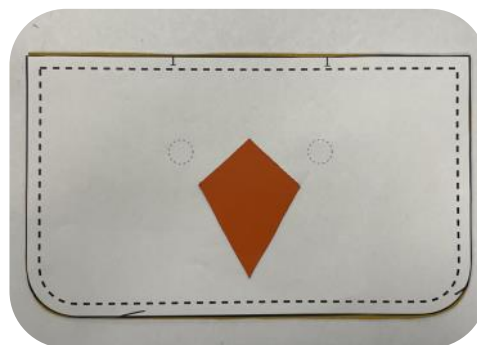


### Step 3

On the pouch paper pattern, cut out the beak/snout/muzzle section, to create a hole for easy placement of vinyl beak/snout/muzzle piece.



Place the paper pattern onto the right side of the pouch vinyl. Using the cut out as a placement guide, glue the beak/snout/muzzle into position.



Carefully remove the paper pattern and set aside to dry.



Repeat above process to glue on the eyes and nostrils.



## Step 4 Applique the eyes & nostrils (Optional)

Attach the AcuFeed foot holder (single) and Zipper ED foot.

Thread machine with black thread  
Select straight stitch with lock-off

Adjust the stitch length 2.0

Stitch width to 8.6

Turn foot lift on (pivot) or insert the knee lifter, if available.

Adjust machine speed to slow.

Place the pouch, so that the foot is on top of the eye/ nostril and the needle drop position is just on the inner edge of the spot.

Sew the locking stitch, one stitch forward, then stop.

With the needle down, raise the foot [for models with auto foot lift the foot will raise automatically]

Continue to slowly stitch around the edge of the eyes and nostrils.

Press the lock-off button to finish the stitch.



## Step 5

Applique the beak/snout/muzzle and sew facial features.

Attach the VD foot and select triple straight stitch.

Adjust stitch length 2.6 (centre needle position)



For the Chicken – stitch around and down middle of beak.

For the Cow – stitch around each spot, muzzle, eyelashes, and a line for the mouth

For the Pig – stitch around the nose and a line for the mouth.

To finish off stitching, press the reverse button to finish lock-off the stitch.



## Step 6 Sew the comb, ears and horns.

Following manufacturer's directions, affix the interfacing to the wrong side of the fabric.

Trace around pattern pieces.

Chicken - Cut out 1x pair of combs

Pig - Cut 2 pairs of ears

Cow - Cut 2 pairs of horns





## Step 7

Thread machine with thread to match fabric.

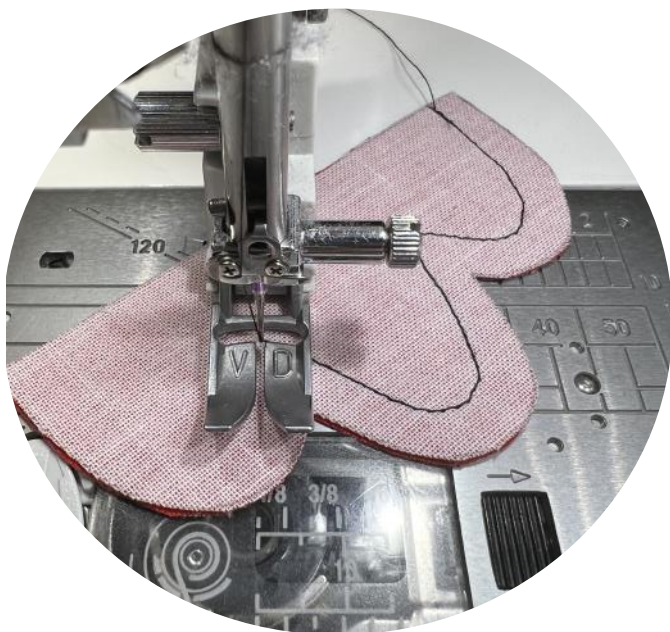
Select straight stitch with lock-off.

Adjust stitch length to 1.6-1.8

Stitch width 4.5 or centre needle position

With right sides together, line the edge of the foot with the raw edge of the fabric pieces.

Stitch around the shapes as indicated by the dashed lines on the pattern, pivoting at the corners & points.



Trim seam allowance around curves.

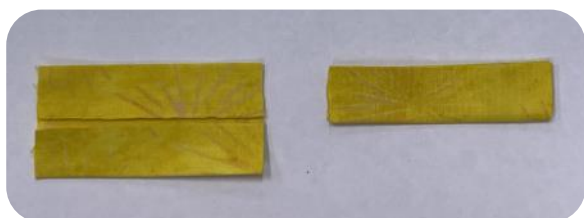
Clip into corners.

Turn right sides out and press.



## Step 8 Zip

Press zip ends in half, open and press the raw edges in to the middle. Fold in half again and press.



Move the zipper pull to the middle of the zip.

Measure and cut the zip to a length of 19½ cm | 7¾" by trimming of both ends.

TIP: Before cutting, sticky tape the open end together on the marked cut line.



Position the fabric zip end over the raw edges of the cut zip and stitch into position.



Trim off the excess fabric inline with the edges of the zip.

Repeat for the other side of the zip.



## Step 9 Insert Zip and Lining

Attach zipper (ED) foot

Select straight stitch with lock-off

Stitch width: 0.0 or far left needle position

Working on the right side of the back pouch piece, first place the comb/ears/horns right sides down and baste into position. *See image on next page.*



With zip right side down, centre along the top edge of the pouch back.

Then, place lining right side down, use the quilt clips to hold in position.



Line the righthand edge of the foot with the raw edges of fabric and sew across to insert the zip.



Select triple straight stitch

Adjust length to 2.8 and width to 8.0

Fold the lining and comb/ears/horns out to the side to stitch only through the vinyl and zipper tape.

Top stitch along the edge of the zip to hold the seam allowances in place.

Repeat for other side.



## Step 10 Sew Pouch

With right sides together, matching raw edges.

Align the front and back pouch and linings together and use the quilt clips to hold in position.

Starting on the bottom edge of the lining, approx. 5cm | 2" away from the corner.



Sew around the corner and along the side of the pouch making sure **NOT to catch the zipper ends.**

Keep sewing around the pouch, stopping 5cm | 2" after the final corner, leaving an opening along the bottom of the lining.





## Step 11 Finishing Pouch

Clip seam allowance around the corner curves.

Turn right side out.

Stitch the opening in the lining, closed.



Push the lining inside the pouch.



FINISH.

Janome Model Machines with AcuFeed Flex are:

Continental M17, MC15000, MC14000, MC12000,

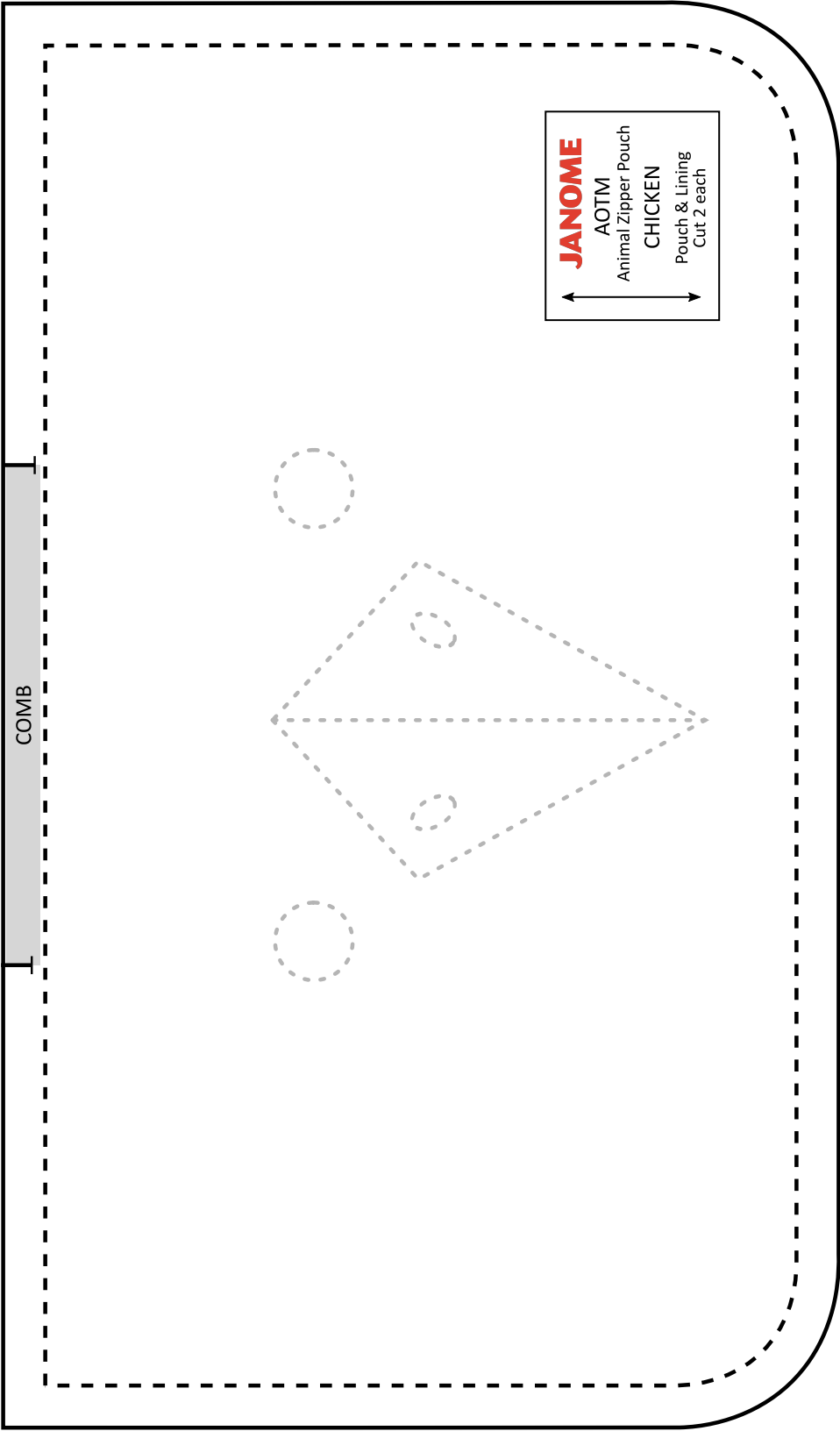
Continental M7P, MC9450QCP, MC9400QCP,

MC8200QCP *Special Edition*, MC6700P, Skyline S9,

Skyline S7, Skyline S6, MC8900QCP *Special Edition*,

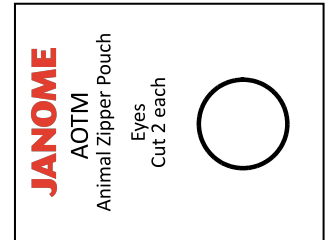
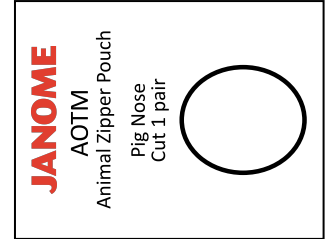
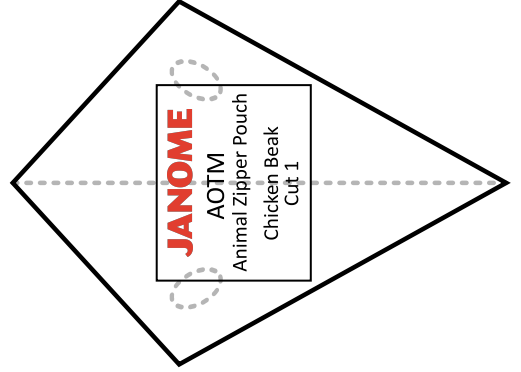
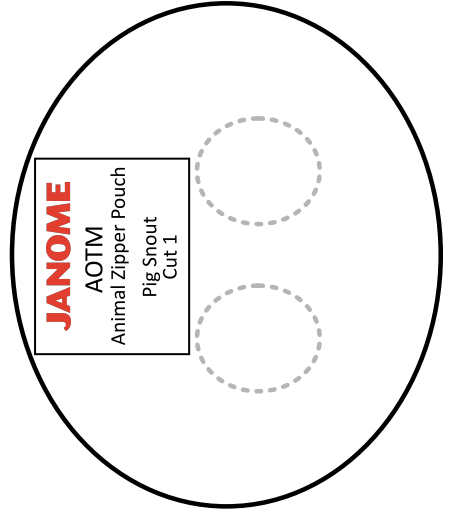
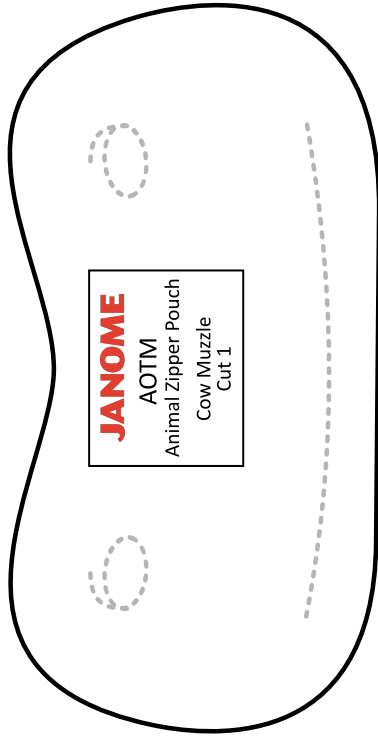
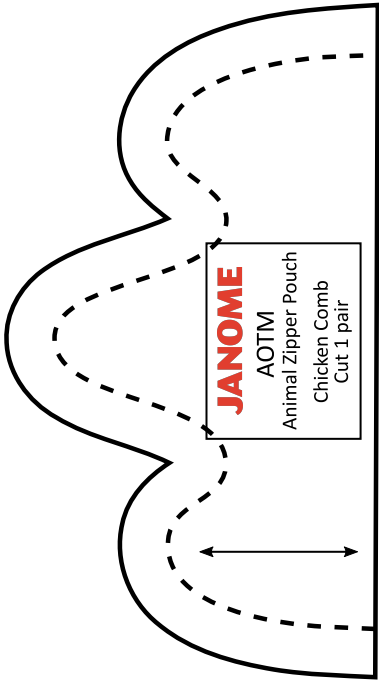
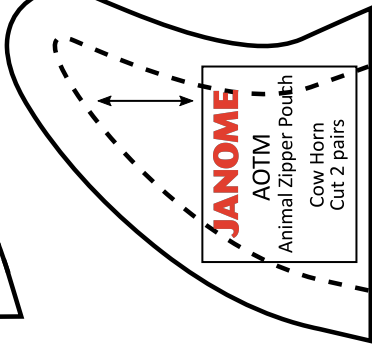
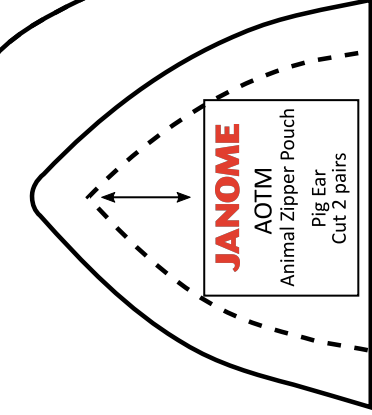
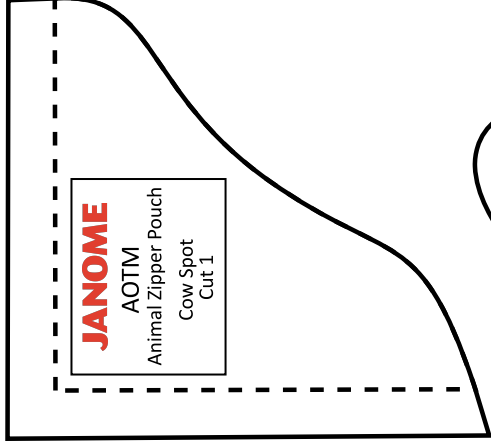
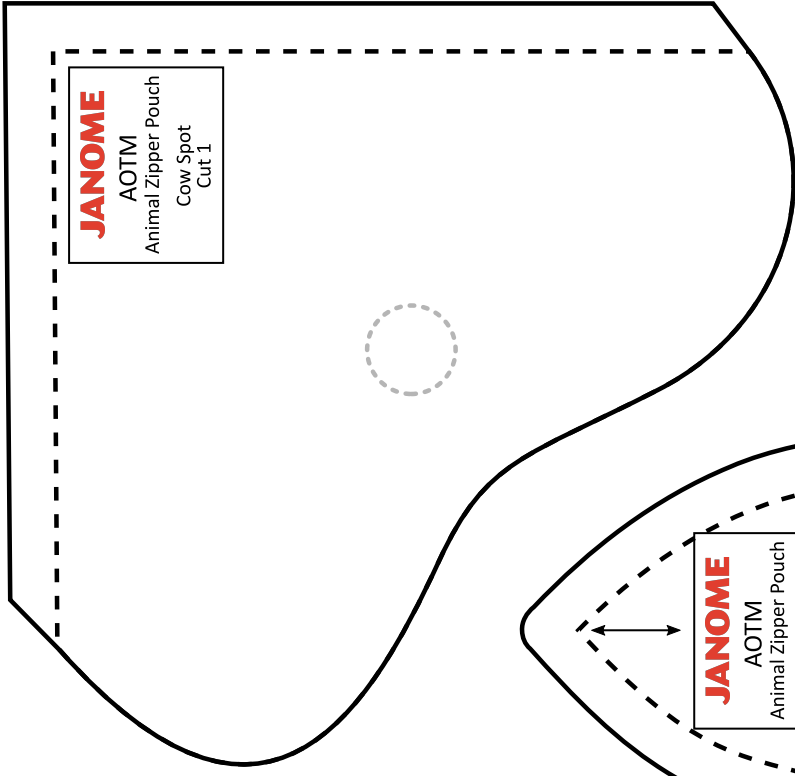
MC8900QCP, MC8200QC.

*The above model list was correct as at February 2023.*

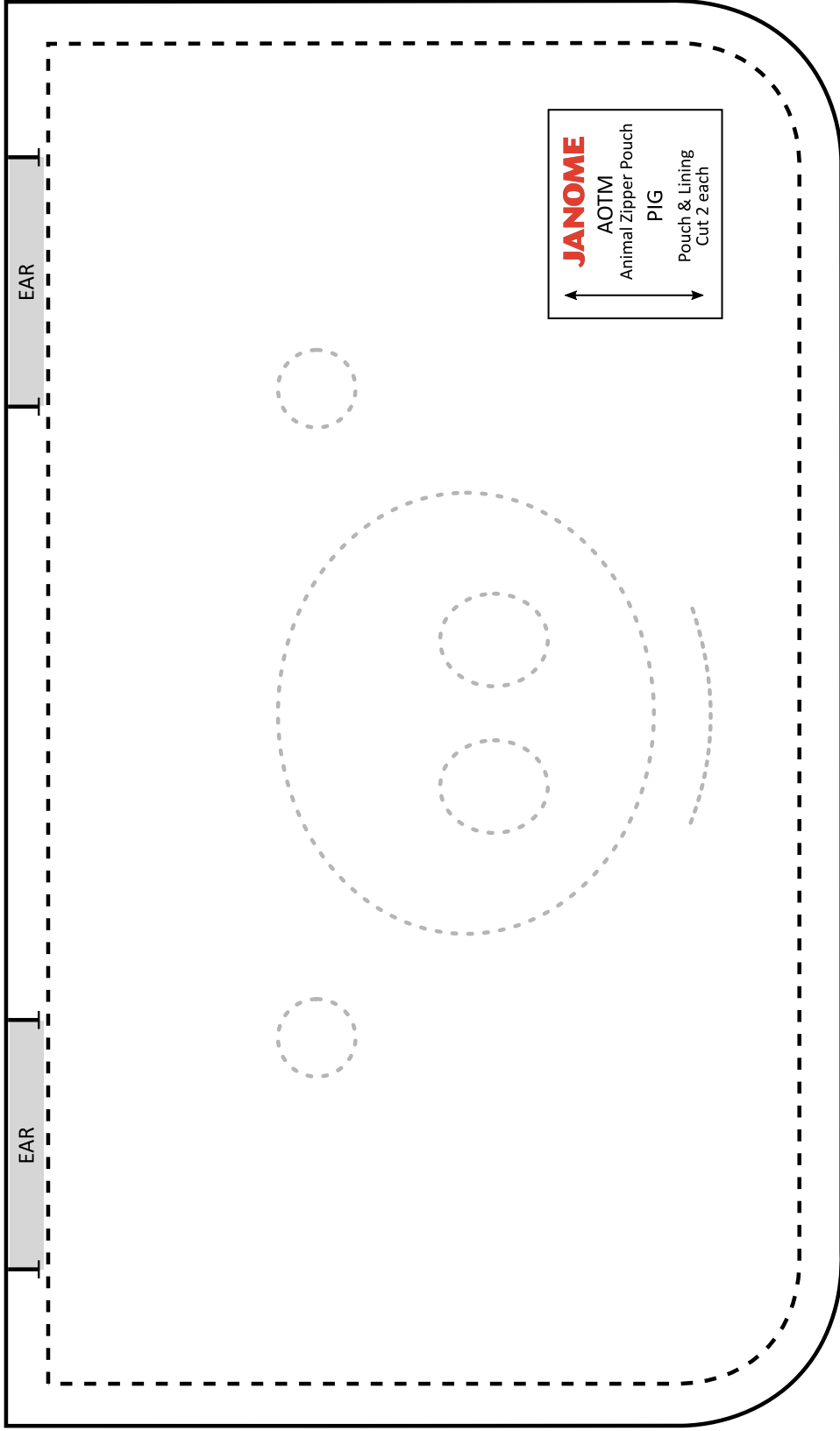


COMB

**JANOME**  
AOTM  
Animal Zipper Pouch  
CHICKEN  
Pouch & Lining  
Cut 2 each



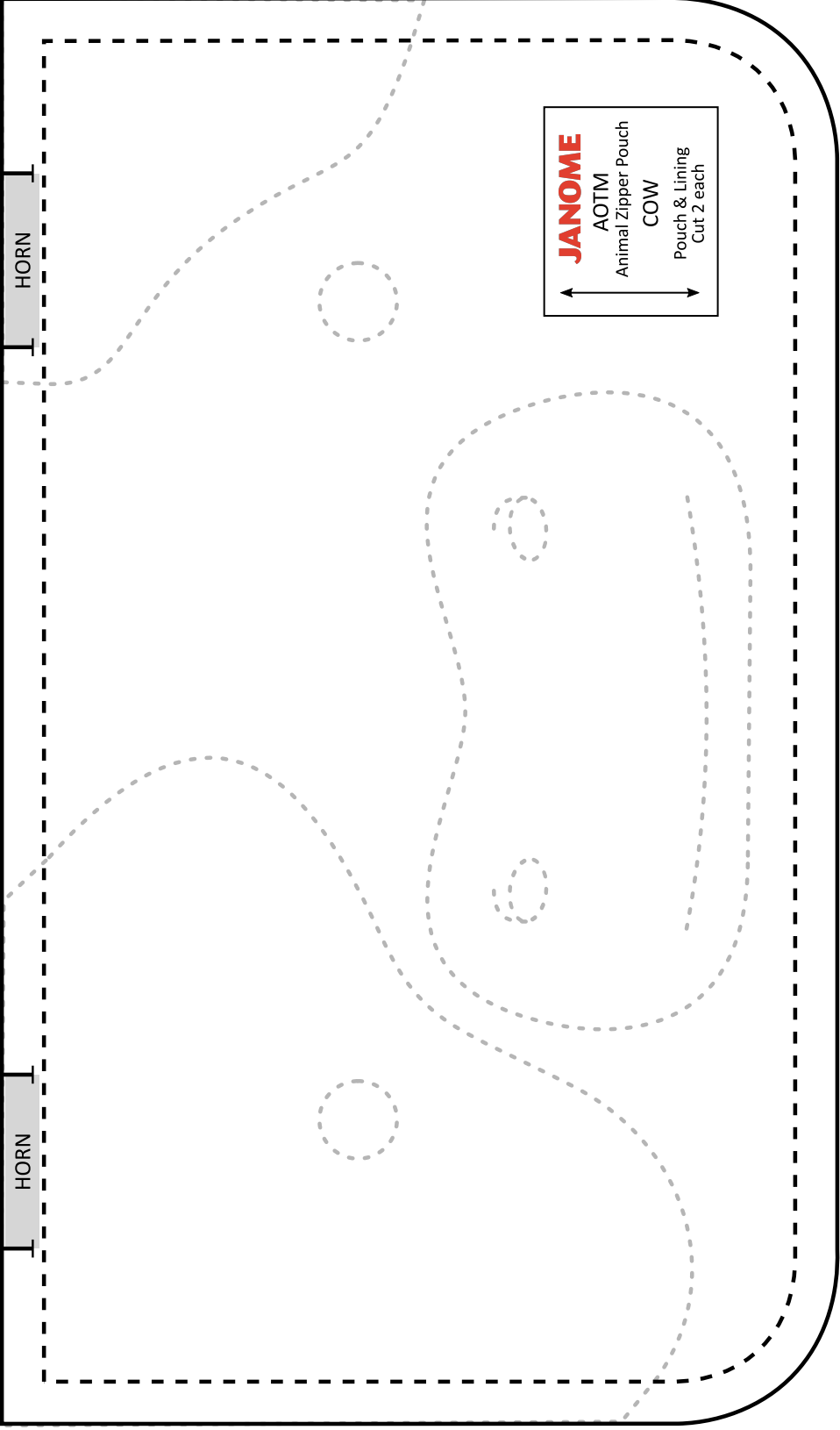




**JANOME**  
AOTM  
Animal Zipper Pouch  
PIG  
Pouch & Lining  
Cut 2 each

EAR

EAR



**JANOME**  
AOTM  
Animal Zipper Pouch  
COW  
Pouch & Lining  
Cut 2 each